

Lighting Planners Associates Presents  
Travelling Exhibition Berlin • Singapore • Hong Kong • Tokyo

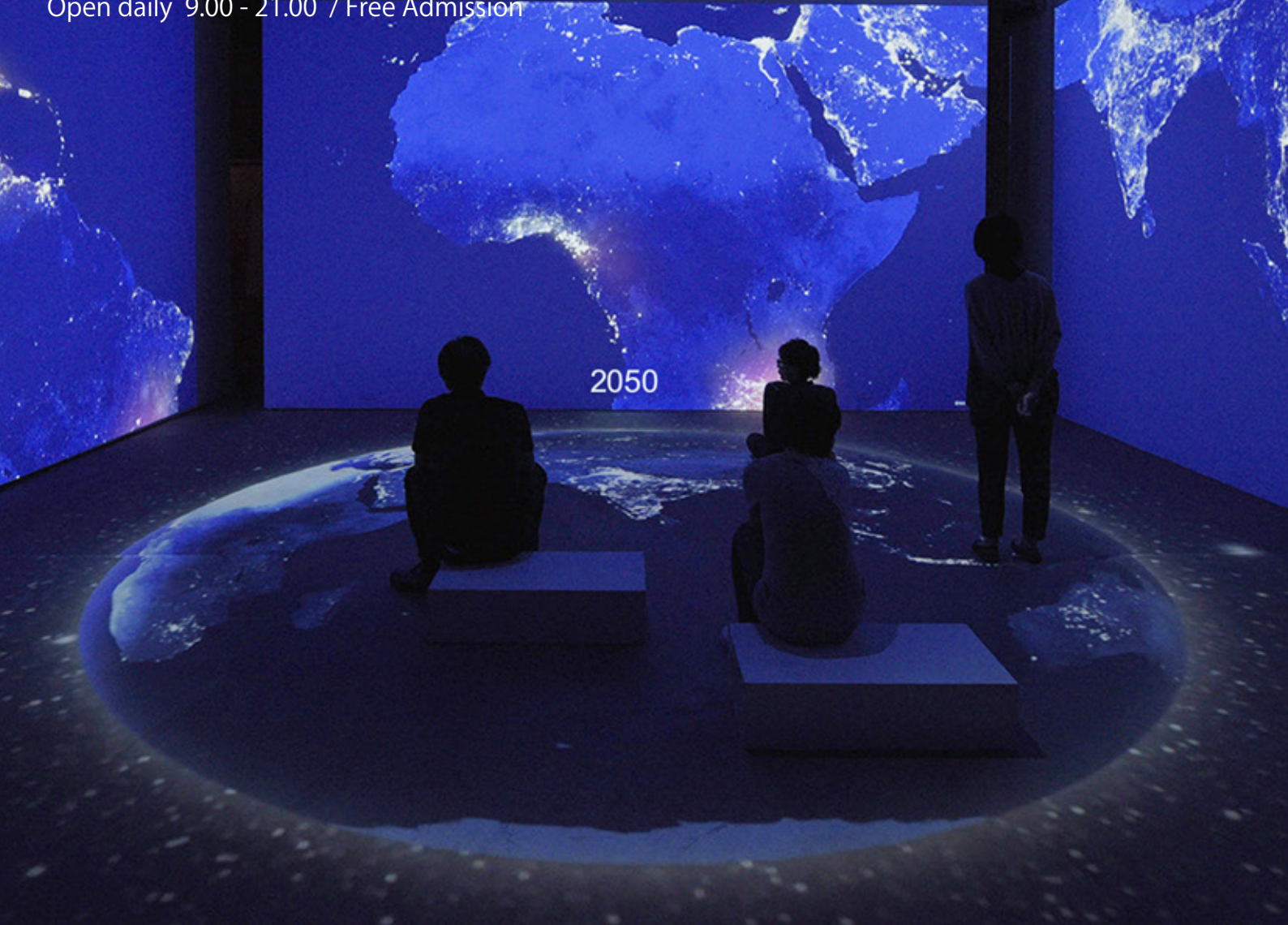
# Nightscape 2050

A Dialogue between Cities-Light-People in the Future

24th October (Sat) - 21st November (Sat), 2015

Venue: National Design Centre, Singapore

Open daily 9.00 - 21.00 / Free Admission



Organized by



Lighting Planners Associates

Supported by



Host Venue

NATIONAL  
DESIGN  
CENTRE

Travelling Exhibition  
Sponsored by



Singapore Exhibition  
Sponsored by



Technical Support by First Design System, Julia Japan





# Nightscape 2050 A Dialogue between Cities-Light-People in the Future

This exhibition aims to explore the interactions between people, light, and cities in the year 2050. "Nightscape" does not just mean the evening view; to us nightscape means how people, light and cities are in a state of being. How can lighting design contribute to the creation of

"wonderful encounter of light and people"? What can we expect our lighting environment in 2050 to be? We hope this exhibition will become a platform to exchange dialogue of our delightful future of light and people throughout the world.

## Lighting Pavilion

In this dark studio, you will experience various forms of light and lighting. The experience is comprised of three parts. Hope you can feel the light!



## Learning from Children

Children workshops were conducted to learn who their heroes and villains of light are, by taking walks in the evening and observing the nightscape. Their observations are pure yet sharp, even dangerous. What can adults learn from them?



## Evolution of Singapore's Nightscape - from 1800 to 2050 -

A timeline of critical events in Singapore's history that shaped the evolution of lighting and the city itself to the present day, with a glimpse into the imaginable future proposed by design and art students.

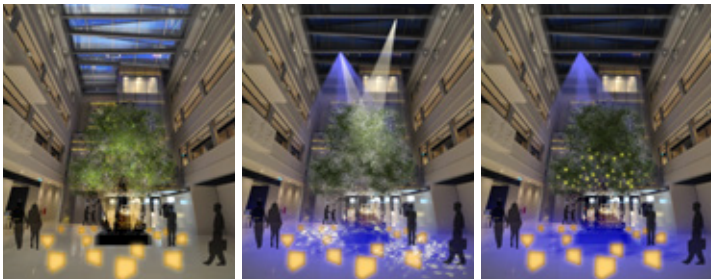


C.K. Tang Department Store in the 1950s

Marina Bay Nightscape in 2015

## Atrium - Day & Night Lighting

Experience the transition of light from day to evening, by observing different lighting on a big tree that will be located in the middle of the atrium.



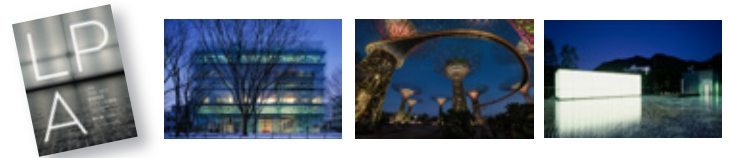
## Learning from Masters

Interviews of 5 experts in design/art and technology about their visions for lighting in the future will be presented. Their ideas are thought-provoking.



## Who is LPA?

A section of the exhibition also shows a chronological chart of architectural lighting design and the projects of LPA as well as their latest monograph, "LPA 1990-2015 Tide of Architectural Lighting Design."



## Upcoming Events at Atrium

Check our Facebook for more info!!

### Light Bar

"Come and enjoy special luminous cocktail !!"  
30 Oct - 21 Nov, Every Friday & Saturday 19:00-21:00

### Talk session

"Singapore nightscape - past, present and future"

Admission: Free

Registration required at [singapore@lighting.co.jp](mailto:singapore@lighting.co.jp)

7 Nov (Sat) 18:30pm - 20:00pm

Guest speaker:  
**Mark Dytham**  
(Co-founder of Klein Dytham Architecture)

**Kho Peng Beng**  
(Co-founder of ARC studio architecture + urbanism)

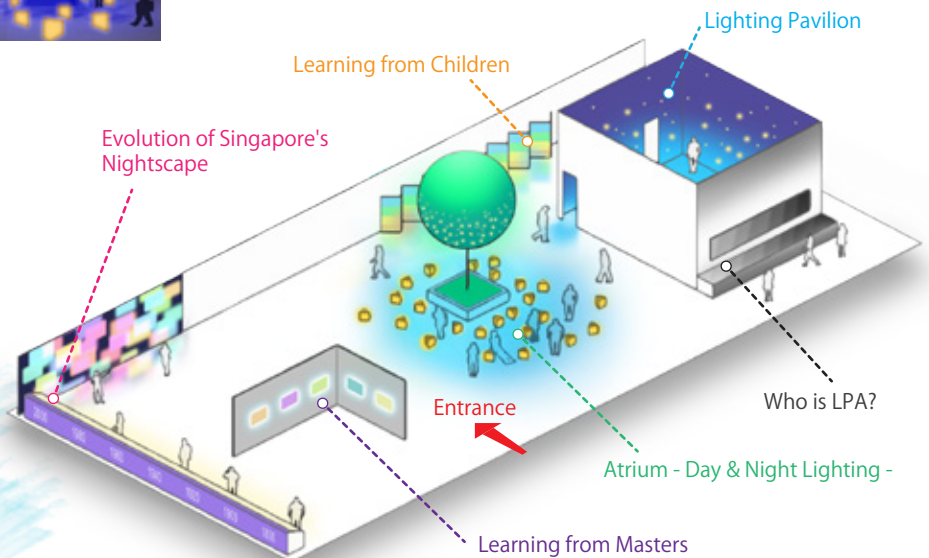
Moderator:

**Dr. Lai Chee Kien** (Adjunct Associate Professor at SUTD)

13 Nov (Fri) 18:30pm - 20:00pm

Guest speaker:  
**Michael Lee**  
(Artist)

**Kaoru Mende**  
(Principal, Lighting Planners Associates)



NATIONAL  
DESIGN  
CENTRE

National Design Centre  
111 Middle Road Singapore 188969  
+65 6333 3737  
[http://www.designsingapore.org/NDC/About\\_NDC.aspx](http://www.designsingapore.org/NDC/About_NDC.aspx)

[Contact]  
Lighting Planners Associates (S) Pte. Ltd.  
Email: [singapore@lighting.co.jp](mailto:singapore@lighting.co.jp) URL: [www.lighting.co.jp](http://www.lighting.co.jp)

Travelling Exhibition by LPA  
[www.facebook.com/lpa.exhibition](http://www.facebook.com/lpa.exhibition)

